

CopyCentre®
C123/C128

WorkCentre®
M123/M128

WorkCentre® Pro
123/128

XEROX®

Technology | Document Management | Consulting Services

copy | print | scan | fax | email

Simply
**leading
edge**



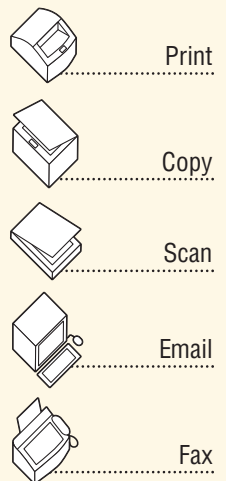
Simple-to-use for unparalleled performance

Simplify your workday with a new family of office machines from Xerox, available at three feature-rich levels. Their major strengths include true 1200 dpi print resolution, best-in-class media handling, and simply outstanding copying, scanning and document workflow functionality. Whether you need basic copying, copying and printing, or a full suite of multifunction capabilities, Xerox offers the highly evolved device that you need to get your work done quickly and efficiently.

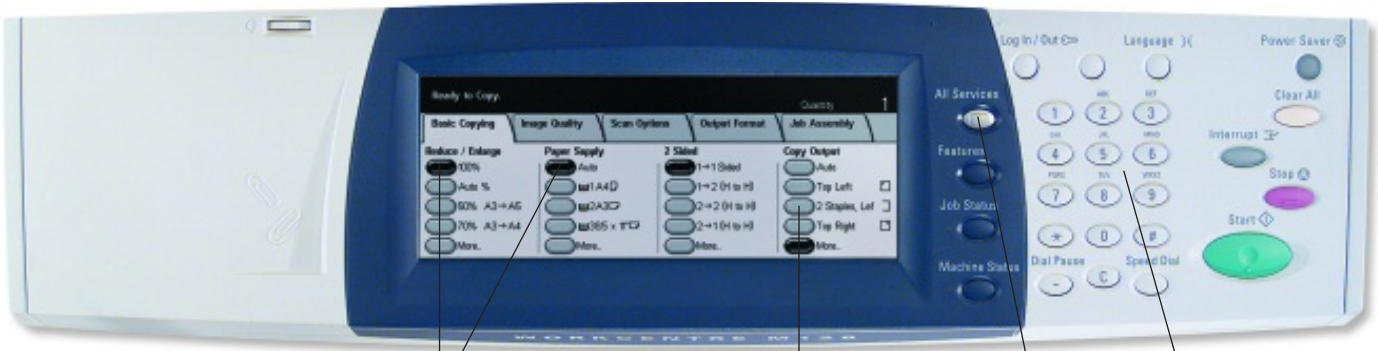


More choices to meet your needs

Choose the level of functionality that you need to be productive. From walkup copying with optional fax, to copying and network printing, all the way to print, copy, scan, fax and email with unparalleled speed and power.



Many features are accessible with the touch of a single button, thanks to a simple, intuitive user interface.



Time-saving "Auto" features make correct selections for you to ensure high-quality output

Advanced document production functionality is right at your fingertips

Convenient access is provided to advanced functions such as network scanning, fax and e-mail

Keypad

Uniquely simple

With Xerox, advanced features are easy to use. An intuitive interface and intelligently crafted paper handling make these machines a joy to have in the office.

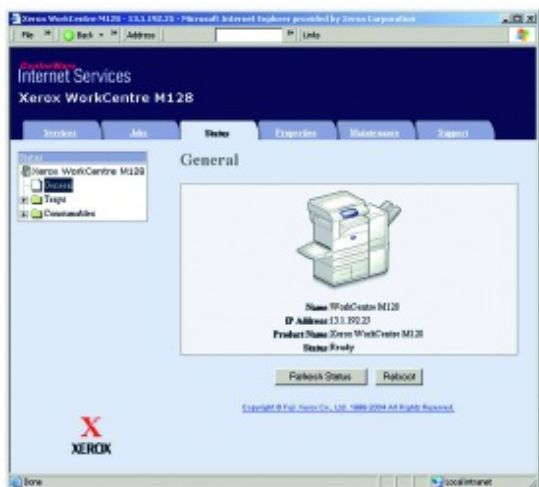
- Smart paper trays sense paper size and automatically match the requirements of the print application.
- A short paper path makes paper handling extremely reliable – even for heavy or specialty papers.
- Industry-leading user interface reduces steps to complete everyday jobs.
- Keep work flowing with programme-ahead capabilities to perform multiple tasks simultaneously.

Leading-edge features

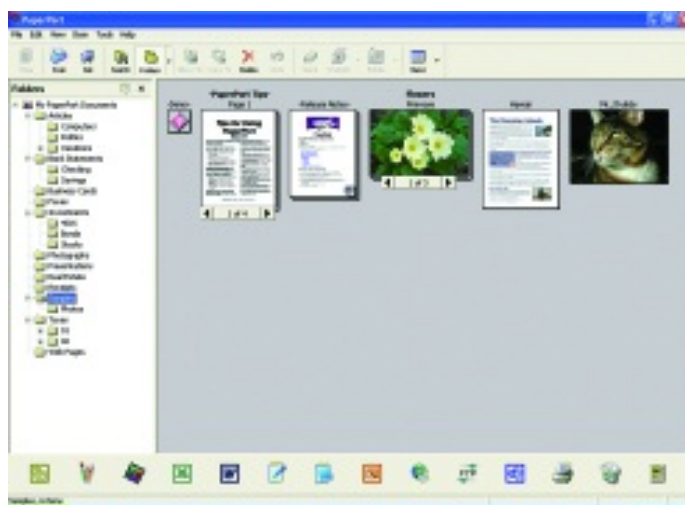
Packed with a full range of advanced features you won't find on other office machines in this class, these Xerox products automate daily tasks.

- With the printing option, you get 1200 x 1200 dpi resolution, an optional 20 GB print hard drive and true Adobe® Postscript® 3™ for maximum performance in a busy, shared environment.
- Save and store jobs on the device and print/copy when you need them.
- Xerox Meter Assistant™ automatically submits your meter reads with no user intervention, increasing your billing accuracy and enabling a built-in audit process.

- Xerox SuppliesAssistant™ manages your supplies usage and ordering to ensure you have the right supplies available at any time.
- CentreWare Scanning Services lets you move paper documents into a digital workflow and quickly access, store or distribute them to anyone, anywhere, in virtually any format.
- Special transparency feature delivers transparencies and handouts in the same job.
- Lightning fast scans – up to 50 images per minute (in 200 dpi mode) – get the job done ahead of schedule.



An Embedded Web Server (EWS) allows you to monitor print jobs and run status using a PC browser. Users can set print and fax functions from the PC. Network administrators can better understand and support the office's printing needs.



Scan to PC Desktop® lets you move documents into word processing, spreadsheets and database applications for editing, distribution and storage... saving time, effort and money.

Technologically intelligent

These devices are full of robust, high-performance features that are scalable to any workgroup. They streamline and integrate processes to simplify device management and increase productivity.

- Best-in-class scanning solutions convert hardcopy into digital documents and distribute them anywhere: e-mail, PC desktop, file/server, internet fax.
- Scan to PC Desktop™ software lets you move documents into word processing, spreadsheets and database applications for editing, distribution and storage... saving time, money and effort.
- Secure print, secure fax and encrypted data transmission protect your mission critical information.
- CentreWare® Web software proactively manages an entire enterprise-wide print environment regardless of manufacturer. It allows you to closely monitor your system to ensure everything is working smoothly.
- Easily set up, monitor and manage remote devices from your desktop using CentreWare® Internet Services software.



Simplicity through multiplicity

Necessity breeds invention...such as the new family of office machines from Xerox. Whether you need copying, printing, faxing, or all of the above – plus more – Xerox combines multiple features into one streamlined system. The more functions at your fingertips, the faster and easier your workflow. Multiply productivity while simplifying tasks with these powerful players.

CopyCentre® C123/C128

digital copier



The basics plus more

The CopyCentre C123/C128 copier goes beyond the basics with a host of special features to make everyday copying jobs simple.

- Fast copying at 23/28 ppm, with your first copy out in less than 4.5 seconds
- Flexible paper handling with automatic duplexing
- A multitude of special features make copying quicker and more convenient, including Build Job, Transparencies +N-Sets, Annotation, Multiple-Up, Booklet Creation, Repeat Image, Posters, Covers and Book Copy
- Optional walk-up fax extends your capabilities

WorkCentre® M123/M128

copier-printer



Add powerful network printing at an affordable price

The WorkCentre M123/M128 multifunction system is the next step up, providing the same flexible copying capabilities as CopyCentre, but with powerful printing added.

- Network printing meets busy workgroup needs for speed and efficiency
- Print features including Watermark, Covers and Posters make complex print jobs simpler, as do advanced features like Sample Set, Delay Print, Annotation and more
- Network management tools enable simple installation and add powerful administrative features

WorkCentre® Pro 123/128

advanced multifunction system



Multiple functions in one easy system

With this robust machine you get all the features of WorkCentre, plus advanced multifunctionality.

- Standard additional print features, including Secure Print and Delay Print, increase your options while protecting mission critical information
- Scan to multiple destinations, including email, network file server, Mailbox, Desktop, Templates and I-Fax
- Walk-up fax comes as standard



Call today. For more information, speak to your local representative or visit us at www.xerox.com/office

United Kingdom & Eire
Tel: 00 800 9000 9090

| CONFIGURATIONS | CopyCentre® C123 | CopyCentre® C128 | WorkCentre® M123 | WorkCentre® M128 | WorkCentre® Pro 123 | WorkCentre® Pro 128 |
|------------------------------|--|------------------|---|------------------|--|---------------------|
| Speed | 23 ppm | 28 ppm | 23 ppm | 28 ppm | 23 ppm | 28 ppm |
| Duty cycle (pages/mo) | Up to 75,000 | Up to 100,000 | Up to 75,000 | Up to 100,000 | Up to 75,000 | Up to 100,000 |
| Paper handling | Two 500-sheet Trays, 100-sheet Bypass Tray (Total 1,100 sheets) | | | | | |
| Paper trays | Two Tray Option 500 + 500 sheets (Total 2,100 sheets) | | | | | |
| Optional | High-Capacity Feeder Option 800 + 1200 sheets (Total 3,100 sheets) | | | | | |
| Paper output | 500 sheets, Automatic two-sided (optional) | | | | | |
| Finisher (optional) | Finisher/Stapler (1,000-sheet, 50 sheets stapled, 3-position stapling) | | | | | |
| Copy | | | | | | |
| First page out time | < 4.5 seconds | | | | | |
| Resolution | 600 x 600 dpi | | | | | |
| Print | | | | | | |
| First page out time | N/A | | < 4.5 seconds | | | |
| Resolution | N/A | | 1200 x 1200 dpi | | | |
| Processor | N/A | | Power PC 300 MHz | | | |
| Connectivity | N/A | | USB 2.0, Parallel, 10/100 BaseT Ethernet, IEEE 1284, optional 802.11b/g (via 3rd party) | | | |
| Fax | | | | | | |
| Speed | Optional | | | | 33.6 Kbps with V34 + JBIG compression | |
| Compression | Optional | | | | JBIG, MMR/MR/MH | |
| Resolution | Optional | | | | Presets up to 600 dpi | |
| Scan | | | | | | |
| Resolution | N/A | | Optional* | | Up to 600 dpi | |
| Scan to e-mail | N/A | | Optional* | | Yes (LDAP enabled) | |
| Scan destinations | N/A | | Optional* | | Scan to E-mail, Server (FTP or SMB), Mailbox, Desktop, Templates and I-Fax | |
| I-Fax | N/A | | Optional* | | Optional with Scanning | |

*Requires fax kit and hard disk drive

Copying

Speed: 23/28 copies per min.
Resolution: 600 x 600 dpi
First Copy Out: < 4.5 seconds
Full Duplex Option: Yes (1-2, 2-2, 2-1)

Reduce/Enlarge

25 - 400% in 1% increments
Productivity: Scan Once Print Many, Electronic Pre-Collation, Program Ahead

Multiple Copies: Up to 999 copies of multiple page originals

Auditron: up to 500 accounts
Option: Foreign Device Interface

Device Memory

C123/C128: 128 MB

Printing (WorkCentre or WorkCentre Pro)

Technology: Laser black-and-white

Speed: 23/28 ppm Letter/A4
Resolution: 1200 x 1200 dpi

First Print Out: < 4.5 seconds

Duplex Option: Yes

Page Description Language (PDL): PCL6;

Optional Adobe® PostScript® 3™

Print Drivers: Windows 98/NT4.0/2000/Me/XP,

Interfaces: USB 2.0 standard; Parallel Port, IEEE

1284, 10/100baseT Ethernet, Wireless LAN

(IEEE 802.11) via third party wireless equipment

Device Memory

M123/M128: 256 MB

Option: 20GB Hard Disk Drive

WorkCentre Pro 123/128: 256 MB w/20GB hard drive

Scan (WorkCentre Pro)

Scan Resolution:

Optical Resolution: 600 x 600 dpi

Depth: 1 bit

Text and Halftone: 8 bit

Bundled OCR Software: PaperPort SE 9.0,

OmniPage SE v2.0

Faxing

Transmission Speed: 33.3 Kbps w/JBIG

Communication Mode: Half Duplex

Modem Speed: 33.6 Kbps

Data Compression: JBIG, MMR/MR/MH

Resolution: pre-sets up to 600 dpi

Dialing

Speed Dials Up to 500 locations

Group Dials Up to 50 supported

Fax Features

Halftones: 256 levels

Secure Fax: send and receive

PC Fax (LAN)

Email (WorkCentre Pro)

Scan to SMTP addresses

Local user access and authentication

Device network access and authentication

Guest mode access is available

Network address list search via LDAP

Media Handling

Input Paper Capacity

Standard: Two Trays (500 + 500 sheets)

Optional: Two Trays (500 + 500 sheets) or

High-Capacity Tandem Tray (800 + 1,200 sheets)

Bypass Tray: 100 sheets

Auto Tray Switching Capable

Paper Size

Minimum: 148 x 210 mm

Maximum: 297 x 420 mm

Paper Weight

Tray 1: 60 gsm - 105 gsm

Tray 2, 3, 4: 60 gsm - 216 gsm

Bypass Tray: 60 gsm - 216 gsm

Document Handler: 50 Sheets

Output Tray Capacity: 500 Sheets

Media Types: Paper, envelopes, labels, transparencies

Finisher: 1,000-sheet, 50 sheets stapled, 3-position

stapling

Physical Dimensions (WxDxH):

With stand (no finisher): 1,340 x 1,185 x 1,143 mm

With Finisher and High-Capacity Feeder Option:

2,140 x 1,185 x 1,524 mm; Weight: 63.5 kg; up to

136.53 kg

Device Management

CentreWare Internet Services (Networked Products)

CentreWare Web, CentreWare DP, NDPS and

HP Openview

Operating Environment

Temperature

Maximum Range: 10° - 35°C

Recommended Range: 16° - 30°C

Humidity

Maximum Range: 15 - 85%

Recommended Range: 30 - 70%

Electrical

Power: 220 VAC 50/60 Hz

Power Consumption:

Average: 1,300 watts

Power Saver Mode: 4.7 watts

Energy Saver: ENERGY STAR® Compliant

Supplies

Approximate Yields

Toner - Starter kit: 11,000 images*; Replacement

kit: 30,000 images*

Drum Cartridge - 60,000 images*

*Capacities are approximate, based on 5% coverage

on an A4-sized page and dependent on customer job

mode run length

Agency Approvals

Safety: UL Safety

CSA Safety



Adobe PostScript 3™

