

**XEROX®**

Technology | Document Management | Consulting Services

**WorkCentre®**  
5632 / 5638 / 5645 / 5655 / 5665 / 5675 / 5687

print | copy | scan | fax | email

# The power of office productivity



# WorkCentre®

5632/5638/5645/5655  
/5665/5675/5687



Copy



Print



Scan



Fax



Email



WorkCentre 5655 with Office Finisher

**High-speed performance.**  
**Outstanding productivity.**  
**Advanced multifunction capabilities.**

These are the essentials of the all-in-one office powerhouse that easily handles the high-volume print demands of large, busy workgroups. And with robust copying, scanning, faxing and a host of innovative Xerox technologies, you get a total workflow solution that excels at streamlining your unique job processes.

## Ultimate flexibility and performance

Engineered to exceed your highest expectations, Xerox WorkCentre multifunction systems maximise office productivity, delivering the power and advanced functionality needed to help your workgroup achieve exceptional results — smarter, faster and easier.

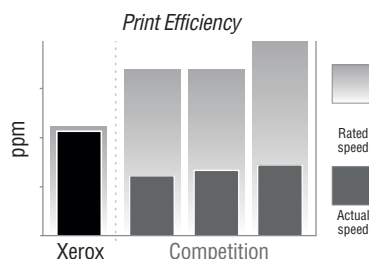
### One robust platform

Choose the speed that suits your workgroup — from 32 ppm up to 87 ppm — and get the same functions and usability features regardless of the speed.

### Truly faster printing

The SMart Controller's advanced design delivers the fastest effective network print speed in the industry. When printing the type of documents business professionals use every day, Xerox WorkCentre multifunction systems print faster than the

competitions' higher-speed-rated systems.



### Experience true multi-tasking

These multifunction systems have the power to perform five tasks at once: RIP, receive, programme ahead, process the queue, and transmit. This advanced capability lets you copy, print, scan or fax even while other jobs are running.

### No printing bottlenecks

The Xerox-exclusive Print Around feature holds a job needing resources (such as a different paper size) and prints the next job in the queue. Plus, users can manage the job queue at the device by promoting or deleting jobs accordingly.

Select a job to get details or to perform operation

All incomplete jobs		
#	Job Name	Status
1	Bob's Slides	HELD : RESOURCES
2	Anni's Report	PRINTING

Print Around feature keeps jobs moving

### Smaller network-friendly files

JBIG 2 and MRC scan compression technologies optimise scan and fax performance, providing significantly faster transmission speeds and reducing network load.

## From paper to digital to anywhere

**WorkCentre multifunction systems turn your paper documents into ultraportable digital files and open the door to more possibilities — more ways to organise, store and share your information than ever before.**



Scan to Email



Scan to Mailbox



Scan to Home



Scan to PC



Scan to Network

### Cutting-edge scanning functionality

Increase efficiency with Scan to Email for quick document distribution to multiple email addresses, plus Scan to Mailbox to store on the system and Scan to Home to store on a personal directory.

### Scan format flexibility

Scan directly to PDF, PDF/A or XPS electronic document formats. You can also scan to searchable PDF or XPS formats for universal compatibility and easy archiving, organising, searching and sharing.



Scan to searchable  
PDF and XPS

### Automatic file distribution

The exclusive Xerox SMARTsend™ option lets you route documents to multiple destinations — email, folders or remote devices — from a single scan, using a pre-set workflow. LDAP capability can even integrate your network address book.

### Convert documents into text files

Scan to PC Desktop® software offers editing and document conversion tools, including batch creation of secure PDFs from all PC applications.

### Colour scanning

With optional colour scanning, users can take advantage of all the benefits of scanning while maintaining the original look and feel of full-colour documents (WorkCentre 5665 / 5675 / 5687 models only).

### Store frequently printed documents securely

The Capture/Print, Save and Reprint feature lets you store scanned documents directly on the system for exact reprint later, while also retaining the flexibility to change document parameters before reprinting.

### Extensive Fax capabilities

Network Server Fax, Internet Fax enablement (to avoid long distance charges) and Walkup Fax with LAN Fax eliminate the need for a dedicated fax machine.



*WorkCentre 5687 with High Volume Finisher with Booklet Maker,  
Z fold / C Fold unit, Post Process Inserter and High Capacity Feeder*

## Stay up and running

Innovative reliability features predict when components need replacing. Then, with SMart Kit™ customer-replaceable components, you can change them yourself. No service call needed. And no costly downtime.



The SMart eSolutions system simplifies ownership, with hands-free, hassle-free, secure administration of Xerox devices for automatic meter reads.

## Advanced copy and print features

Plenty of support for specialised print applications, such as annotation, Bates Stamping, ID card copy, tab print capability and page-level programming right from the print driver.



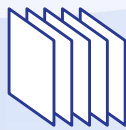
Tab printing

## Better for the environment

Get a powerful multifunction system that's truly environmentally friendly, featuring power save with quick start-up, as well as compliance with ENERGY STAR® 2007 standards.



Robust finishing capabilities let you assemble professional-looking documents.



Collate



Hole punch



Staple



V-fold



Saddle-stitch booklet



- ① Duplex Automatic Document Handler (DADH) automatically scans documents as fast as 85 spm (WorkCentre 5665 / 5675 / 5687 models) or 60 spm (WorkCentre 5632 / 5638 / 5645 / 5655 models).
- ② Convenience Stapler provides off-line 50-sheet stapling.
- ③ 100-sheet Bypass Tray handles heavy paper up to 220 gsm.
- ④ Two 500-sheet Universal-Size Trays hold paper sizes up to A3.
- ⑤ Optional Envelope Kit provides trouble-free feeding of 50 envelopes.
- ⑥ High-Capacity Tandem Tray holds a total of 3,600 sheets of A4-size paper.
- ⑦ For high-volume workgroups, you can add the 4,000-sheet A4-size High Capacity Feeder, or the 2,000-sheet Short-Edge Kit in either A4-size or oversize for A3 media. Highly recommended for use with 5687.
- ⑧ Six optional Finishers. Choose basic features like staple and hole punch, or advanced capabilities to produce paginated, saddle-stitched and folded booklets and Z- and C-folded brochures. An optional Post-process Inserter lets you add preprinted colour covers, tabs and other inserts to your print and copy jobs. →





## Easy, optimised management and accounting

With fast deployment and easy support, your WorkCentre multifunction system is ready to deliver the performance you need, when you need it.

### Flexible, familiar operation

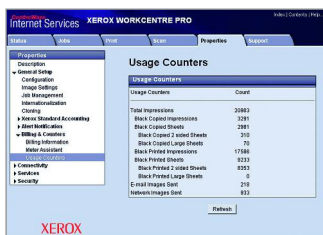
A choice of speed capabilities allows you to select the right device based on the workload demands of each office workgroup. And because they all share the WorkCentre platform, users will recognise the look and feel, including the user interface, print drivers and web interface.

### Streamlined device and fleet management

Server-based CentreWare® Web makes it easy to deploy, configure, troubleshoot and generate usage reports for all network devices, regardless of manufacturer.

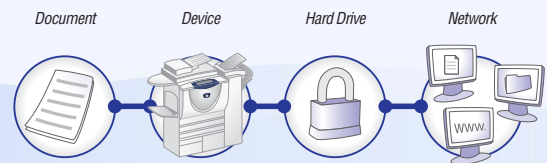
### Easy set-up, seamless administration

Xerox CentreWare Internet Services simplifies installation, cloning and network administration, and provides quick access to system and job status, accounting information and other operational metrics. Plus, automatic email alerts notify network administrators of events that require attention, such as low toner levels.



### Maintain tight control over costs

Use Xerox Standard Accounting software to set user access and usage limits, and to generate usage reports for greater cost control of printing, copying, scanning and faxing.



## Integral Security

Robust security features run the full gamut of entry and exit points to ensure the safety of critical information. Now standard on all models.

- **Network Authentication** restricts access to scan, email and network fax features by validating user names and passwords prior to use. With Audit Log capabilities you'll know who sent what and when.
- **Secure Print** prevents unauthorised viewing by holding jobs in the print queue until a PIN is entered, releasing documents to print. Secure Print job submission utilises IPsec.
- **Image Overwrite** eradicates data by overwriting the disk surface with patterns of data.
- **Embedded Fax** prevents unauthorised device access via the fax subsystem. There is complete separation of the fax telephone line and the network connection.
- **Device Access Password Protection** ensures administrative set-up screen and remote network settings cannot be viewed or altered without authentication.
- **IPv6 Network Routing and 802.1x Security Protocols** provide peace of mind that your WorkCentre device is compliant with existing and emerging connectivity policies.
- **IP Address Restriction (IP Filtering)** controls communications with specific network clients.
- **Secure Scan** transmits files using HTTPS (SSL).
- **Secure Device Administration** with HTTPS is enabled through CentreWare.
- **Secure Access Unified ID System with Follow You Print** let you submit print jobs to a secure print queue and print them at the device of your choice after ID authentication.

Imagine the possibilities...

if you could make your multifunction system work the way you work

The world is changing. There's constant pressure to do more with fewer resources. You know your business better than anyone. Now your WorkCentre multifunction system can adapt to fit the way you work, not the other way around.

Your Xerox WorkCentre multifunction system is now more productive, and your work just got easier. Menus and languages specific to your business or workgroup, such as "fax to accounts payable" or "submit to claims department," can appear on the touch screen. Xerox Extensible Interface Platform, or EIP, is at the heart of this. It enables a variety of applications that extend the power of your WorkCentre by allowing you to securely find, save, print and share critical information with just a few easy steps right on its touch screen.

The possibilities are endless.



## Connect with applications that make your work easier **With EIP**

### Access and print information without the use of a computer.

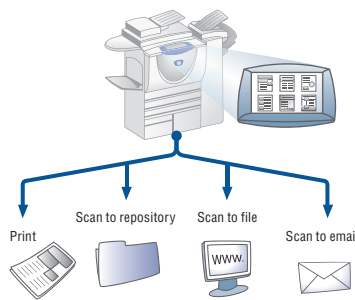
Need your company's latest price list or a brochure on this week's hottest-selling product? Simply use the touch screen on your WorkCentre to browse an online repository such as Xerox DocuShare®, Microsoft SharePoint® or Windows folders, select the document, and print it. No need to use a computer, and no need to keep filing cabinets filled with material that quickly becomes outdated.

### Simply scan information and store it exactly where you want it.

Transform hard copy forms into archived digital information with just a few simple steps. A new patient fills out a medical history form, the receptionist securely scans the form, previews a thumbnail image on the touch screen, and then sends the form to a folder named Patient Records. EIP-enabled applications make it possible

### Conveniently and securely access your WorkCentre with a simple swipe of your ID card.

Xerox makes it easy for you to ensure that only authorised users access your WorkCentre systems by requiring passwords or access cards. Once authenticated, you can access EIP-enabled applications that are personalised to meet your needs.



### Simplify the process for complex fax distributions.

Send and receive faxes even when a fax board has not been installed in the system. Faxes can be scanned in at the system or submitted from a user's desktop using a fax print driver. Faxes can be tracked and audited to ensure regulatory compliance.

### Control costs with user-friendly accounting.

With Xerox accounting solutions you can set usage limits by individual and by function. Track system usage through a printed report, file download, or integration with a partner accounting solution.

### Connect with a variety of advanced partner solutions created with your business in mind.

Xerox EIP enables an array of Alliance Partner solutions that extend the value of your WorkCentre multifunction system with advanced accounting, faxing and scanning capabilities.



It's that **easy.**



	Copier		Copier/Printer		Copier/Printer/Scanner	
	5632 / 5638 / 5645 / 5655 / 5665 / 5675 / 5687		5632 / 5638 / 5645 / 5655 / 5665 / 5675 / 5687		5632 / 5638 / 5645 / 5655 / 5665 / 5675 / 5687	
<b>Speed</b>	Up to 32 / 38 / 45 / 55 / 65 / 75 / 87 ppm		Up to 32 / 38 / 45 / 55 / 65 / 75 / 87 ppm		Up to 32 / 38 / 45 / 55 / 65 / 75 / 87 ppm	
<b>Device Memory</b> 5632/5638/5645/5655: 5665/5675/5687:	128 MB std / 768 MB max 256 MB std / 768 MB max		640 MB std / 1024 MB max 768 MB std / 1024 MB max		640 MB std / 1024 MB max 768 MB std / 1024 MB max	
<b>Paper Handling</b>	<b>Platen</b> (available with 5632); <b>Duplex Automatic Document Handler (DADH)</b> : 5632 / 5638: 75 sheets, 5645 / 5655 / 5665 / 5675 / 5687: 100 sheets <b>Bypass Tray</b> : 100 sheets; Custom sizes: A6 to A3; 60–216 gsm <b>High Capacity Tandem Tray*</b> : 3,600-sheet total (1,600 and 2,000 sheets); Size: A4 <b>Trays 1–2</b> : 500 sheets each; Sizes: A5 to A3; 60–200 gsm					
Paper input	Standard					
	Optional	<b>Stand</b> (available with 5632 / 5638 / 5645) <b>High Capacity Feeder (HCF)</b> : 4,000 sheets; Size: A4 long edge feed (Highly recommended for use with 5687) <b>HCF Kits</b> (HCF required): 2,000-sheet A3 Short Edge Kit or 2,000-sheet A4 Short Edge Kit; <b>Other Kits</b> : Envelope Kit				
Finishing options	<b>Offset Catch Tray</b> (available with 5632 / 5638 / 5645 / 5655 / 5665): 300 sheets <b>Basic Office Finisher</b> (available with 5632 / 5638 / 5645): 1,000 + 250-sheet trays, 30-sheet, single-position stapling <b>Office Finisher</b> (available with 5632 / 5638 / 5645 / 5655 / 5665 / 5675): 2,000 + 250-sheet trays, 50-sheet multiposition stapling, optional hole punch <b>Professional Finisher</b> (available with 5632 / 5638 / 5645): 1,500 + 250-sheet trays, 50-sheet multiposition stapling, 2-hole punch (4-hole option), saddle-stitch booklet making, V-folding; <b>High Volume Finisher (HVF)</b> (available with 5655 / 5665 / 5675 / 5687): 3,000 + 250-sheet trays, 100-sheet multi-position stapling, optional hole punch; <b>High Volume Finisher w/Booklet Maker</b> (available with 5655 / 5665 / 5675 / 5687): adds saddle-stitch booklet making <b>Z Fold / C Fold Unit</b> with HVF w/Booklet Maker: adds A4-size Z- and C-folding <b>Post Process Inserter</b> with HVF and HVF w/Booklet Maker: adds preprinted inserts; <b>Convenience Stapler</b> : 50-sheet stapling					
<b>Copy</b>						
First-page-out time	<b>5632 / 5638</b> : As fast as 4.6 seconds, <b>5645 / 5655</b> : As fast as 3.4 seconds, <b>5665 / 5675 / 5687</b> : as fast as 2.7 seconds					
Resolution (max)	600 x 600 x 8 dpi input / 4800 x 600 dpi output (5632 / 5638 / 5645 / 5655) / 4800 x 1200 dpi interpolated output (5665 / 5675 / 5687)					
Copy features	Automatic 2-sided, Collation, Auto reduction/enlargement, Auto paper select, Auto tray switching, Image quality enhancement, Transparencies, Booklet creation, Multi-up, Invert image, Covers, ID Card Copy, Annotation and Bates Stamping, Build Job, Inserts and tab copying, Sample set, Job storage** and reprint**					
<b>Print</b>	NA		1.4 GHz AMD Athlon dedicated / 80 GB Hard Drive shared			
Processor	NA		Ethernet 10/100 Base T, IEEE802.5 (Token Ring) [via adapter], Wireless Ethernet (IEEE802.11a/b/g) [via adapter]			
Connectivity	NA		PCL®6, PCL5e, PostScript® 3™ emulation, LCDS, SCS, XES and IPDS via third-party transforms, and direct print TIFF, PDF, AS/400 support via Workstation Customisation Objects			
PDL Support	NA		Up to 1200 x 1200 dpi			
Resolution	NA		Delay-, Sample-, Secure-, and Store-Print; Simultaneous rip, receive, programme-ahead, queue-process and transmit; Bi-directional print drivers; Exception page programming; Tab printing; Embedded Web Server for remote control/monitor/setup; Job monitoring at device and at desktop			
Print features	NA		Internet Fax enablement, Network Server Fax enablement, Optional: Walkup Fax (33.6 Kbps, one-line [32 MB] and two-line [256 MB] options) with JBIG compression and LAN Fax			
<b>Fax</b>	Optional: Walkup Fax (33.6 Kbps, one-line [32 MB] and two-line [256 MB] options) with JBIG compression		Optional: Walkup Fax (33.6 Kbps, one-line [32 MB] and two-line [256 MB] options) with JBIG compression and LAN Fax		Optional: Walkup Fax (33.6 Kbps, one-line [32 MB] and two-line [256 MB] options) with JBIG compression and LAN Fax	
<b>Scan</b>	NA		NA		Network Scanning with Email (Authentication and LDAP), Scan to Mailbox, Scan to Home, Scan to searchable PDF, PDF/A and XPS®, Optional (5665 / 5675 / 5687): Colour scan, Scan to PC Desktop, SMARTsend	
<b>Security</b>	Fax Security		Fax Security, Secure Print, 802.1x, HTTPS (SSL), SNMP V3, IPv6, IPsec, Network Authentication, Device Access Password Protection, IP Filtering, Audit Log, Disk Encryption for Store Print and Scan to Mailbox features, Disk Image Overwrite			
<b>Accounting</b>	Internal Auditor – Copy		Internal Auditor – Copy; Xerox Standard Accounting – Copy, Print, Fax, Optional: Network Accounting Kit		Internal Auditor – Copy; Xerox Standard Accounting – Copy, Print, Fax, Scan; Optional: Network Accounting Kit	
<b>Other Options</b>	Upgrade Kit to Copier / Printer, Upgrade Kit to Copier/Printer/Scanner		Upgrade Kit to Copier/Printer/Scanner		NA	
	256 MB Pre collation Memory, Foreign Device Interface, Xerox Copier Assistant		256 MB Pre collation Memory, Foreign Device Interface, Xerox Copier Assistant, USB 2.0 / (IEEE 1284) Parallel Port Kit, Fax / Scan / Accounting Partner Solutions, Xerox Unicode International Printing, Xerox Secure Access Unified ID System™ with Follow You Print™			



\*Available as an option only on 5632/5638/5645 models \*\*Not available on copier-only models

**Call today.** For more information, call **00 800 9000 9090** or visit us at [www.xerox.com/office](http://www.xerox.com/office)

Copyright © 2007 XEROX CORPORATION. All rights reserved. Contents of this publication may not be reproduced in any form without permission of XEROX CORPORATION. XEROX®, WorkCentre®, and CentreWare® are trademarks of XEROX CORPORATION in the U.S. and/or other countries. All other trademarks are the property of their respective manufacturers. As an ENERGY STAR® partner, XEROX CORPORATION has determined that this product meets the ENERGY STAR guidelines for energy efficiency. The ENERGY STAR name and logo are registered U.S. trademarks. The information in this brochure is subject to change without notice. 02/08 W56BR-01EB